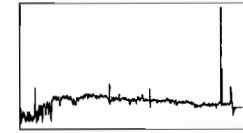
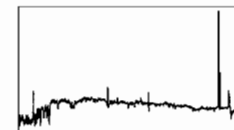
UT Date 2003-09-27 Observers M CalkinsColl. Focus 1080 Grating/Grism 300

File	Exp Time	UT Start	RA	Dec	Gr.	P.A.	Slit	Program	Bin	Comments
0001.DARK	900	22:40	15:52:51.3	+31:31:01	300	90	3.0	#57 Velocity S	2	
0002.DARK	900	22:55	16:08:06.3	+31:30:57	300	90	3.0	#57 Velocity S	2	
0003.DARK	900	23:11	16:23:21.2	+31:30:53	300	90	3.0	#57 Velocity S	2	
0004.DARK	900	23:26	16:38:36.4	+31:30:49	300	90	3.0	#57 Velocity S	2	
0005.DARK	900	23:41	16:53:52.1	+31:30:44	300	90	3.0	#57 Velocity S	2	
0006.DARK	900	23:56	17:09:07.6	+31:30:40	300	90	3.0	#57 Velocity S	2	
0007.DARK	900	0:12	17:24:22.4	+31:30:35	300	90	3.0	#57 Velocity S	2	
0008.DARK	900	0:27	17:39:37.9	+31:30:30	300	90	3.0	#57 Velocity S	2	
0009.DARK	900	0:42	17:54:53.2	+31:30:26	300	90	3.0	#57 Velocity S	2	
0010.DARK	900	0:57	18:10:08.9	+31:30:21	300	90	3.0	#57 Velocity S	2	
0011-0015.BIAS	0	1:20	18:18:14.8	+31:30:19	300	90	3.0	#57 Velocity S	2	
0016-0020.BIAS	0	1:21	18:19:22.4	+31:30:18	300	90	3.0	#57 Velocity S	2	
0021-0024.FLAT	12	1:23	18:21:09.3	+31:30:18	300	90	3.0	#57 Velocity S	2	
0025-0030.FLAT	12	1:25	18:23:38.0	+31:30:17	300	90	3.0	#57 Velocity S	2	
0031-0035.sky	2	1:29	18:27:02.0	+31:30:16	300	90	3.0	#57 Velocity S	2	
0036.COMP	12	1:29	18:27:40.8	+31:30:16	300	90	3.0	#57 Velocity S	2	
0037.BDp332642	30	2:02	15:50:03	33:05:49	300	90	3.0	#56 Spectropho	2	
0038.BDp332642	30	2:03	15:50:03	33:05:49	300	90	3.0	#56 Spectropho	2	
0039.COMP	12	2:04	15:50:03	33:05:49	300	90	3.0	#56 Spectropho	2	
0040.BDp332642	30	2:05	15:50:03	33:05:49	300	78	3.0	#56 Spectropho	2	

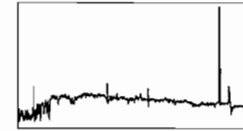
dark current ~ 3 - subtracted

UT Date 2003-09-27 Observers M CalkinsColl. Focus 1080 Grating/Grism 300

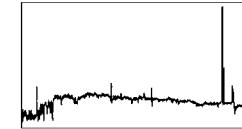
File	Exp Time	UT Start	RA	Dec	Gr.	P.A.	Slit	Program	Bin	Comments
0041.BDp332642	30	2:06	15:50:03	33:05:49	300	78	3.0	#56 Spectropho	2	
0042.COMP	12	2:07	15:50:03	33:05:49	300	78	3.0	#56 Spectropho	2	
0043.TCrB	15	2:11	15:59:30	25:55:12	300	90	3.0	#12 Symbiotic	2	
0044.TCrB	60	2:12	15:59:30	25:55:12	300	90	3.0	#12 Symbiotic	2	
0045.TCrB	7	2:13	15:59:30	25:55:12	300	90	3.0	#12 Symbiotic	2	
0046.COMP	12	2:14	15:59:30	25:55:12	300	90	3.0	#12 Symbiotic	2	
0047.AGDra	2	2:16	16:01:41	66:48:10	300	90	3.0	#12 Symbiotic	2	
0048.AGDra	15	2:16	16:01:41	66:48:10	300	90	3.0	#12 Symbiotic	2	
0049.AGDra	45	2:17	16:01:41	66:48:10	300	90	3.0	#12 Symbiotic	2	
0050.COMP	12	2:18	16:01:41	66:48:10	300	90	3.0	#12 Symbiotic	2	
0051.DracoC1	1200	2:19	17:19:58	57:50:06	300	90	3.0	#12 Symbiotic	2	
0052.COMP	12	2:39	17:19:58	57:50:06	300	90	3.0	#12 Symbiotic	2	
0053.RSOph	10	2:42	17:50:13	-06:42:30	300	90	3.0	#12 Symbiotic	2	
0054.RSOph	60	2:42	17:50:13	-06:42:30	300	90	3.0	#12 Symbiotic	2	
0055.RSOph	150	2:43	17:50:13	-06:42:30	300	90	3.0	#12 Symbiotic	2	
0056.COMP	12	2:46	17:50:13	-06:42:30	300	90	3.0	#12 Symbiotic	2	
0057.YYHer	10	2:48	18:14:34	20:59:19	300	90	3.0	#12 Symbiotic	2	
0058.YYHer	60	2:49	18:14:34	20:59:19	300	90	3.0	#12 Symbiotic	2	
0059.COMP	12	2:50	18:14:34	20:59:19	300	90	3.0	#12 Symbiotic	2	
0060.V443Her	5	2:51	18:22:07	23:27:20	300	90	3.0	#12 Symbiotic	2	

UT Date 2003-09-27 Observers M CalkinsColl. Focus 1080 Grating/Grism 300

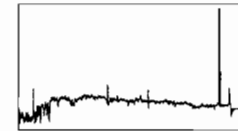
File	Exp Time	UT Start	RA	Dec	Gr.	P.A.	Slit	Program	Bin	Comments
0061.V443Her	40	2:51	18:22:07	23:27:20	300	90	3.0	#12 Symbiotic	2	
0062.V443Her	75	2:52	18:22:07	23:27:20	300	90	3.0	#12 Symbiotic	2	
0063.V443Her	3	2:54	18:22:07	23:27:20	300	90	3.0	#12 Symbiotic	2	
0064.COMP	12	2:54	18:22:07	23:27:20	300	90	3.0	#12 Symbiotic	2	
0065.BFCyg	1	2:56	19:23:53	29:40:27	300	90	3.0	#12 Symbiotic	2	
0066.BFCyg	60	2:57	19:23:53	29:40:27	300	90	3.0	#12 Symbiotic	2	
0067.BFCyg	15	2:58	19:23:53	29:40:27	300	90	3.0	#12 Symbiotic	2	
0068.COMP	12	2:59	19:23:53	29:40:27	300	90	3.0	#12 Symbiotic	2	
0069.CHCyg	1	3:00	19:24:33	50:14:30	300	90	3.0	#12 Symbiotic	2	
0070.CHCyg	5	3:01	19:24:33	50:14:30	300	90	3.0	#12 Symbiotic	2	
0071.CHCyg	0	3:01	19:24:33	50:14:30	300	90	3.0	#12 Symbiotic	2	
0072.CHCyg	30	3:01	19:24:33	50:14:30	300	90	3.0	#12 Symbiotic	2	saturated
0073.CHCyg	0	3:02	19:24:33	50:14:30	300	90	3.0	#12 Symbiotic	2	
0074.COMP	12	3:03	19:24:33	50:14:30	300	90	3.0	#12 Symbiotic	2	
0075.CICyg	2	3:04	19:50:12	35:41:02	300	90	3.0	#12 Symbiotic	2	
0076.CICyg	15	3:05	19:50:12	35:41:02	300	90	3.0	#12 Symbiotic	2	
0077.CICyg	60	3:05	19:50:12	35:41:02	300	90	3.0	#12 Symbiotic	2	
0078.COMP	12	3:07	19:50:12	35:41:02	300	90	3.0	#12 Symbiotic	2	
0079.ZAnd	2	3:09	23:33:40	48:49:06	300	90	3.0	#12 Symbiotic	2	
0080.ZAnd	5	3:09	23:33:40	48:49:06	300	90	3.0	#12 Symbiotic	2	

UT Date 2003-09-27 Observers M CalkinsColl. Focus 1080 Grating/Grism 300

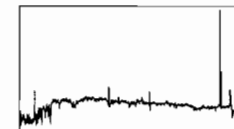
File	Exp Time	UT Start	RA	Dec	Gr.	P.A.	Slit	Program	Bin	Comments
0081.ZAnd	15	3:10	23:33:40	48:49:06	300	90	3.0	#12 Symbiotic	2	
0082.ZAnd	1	3:10	23:33:40	48:49:06	300	90	3.0	#12 Symbiotic	2	
0083.COMP	12	3:11	23:33:40	48:49:06	300	90	3.0	#12 Symbiotic	2	
0084.sn2003hu	1200	3:16	19:11:31.4	+77:53:35	300	-18	3.0	#2 SN Observat	2	
0085.COMP	12	3:37	19:11:31.4	+77:53:35	300	-18	3.0	#2 SN Observat	2	
0086.sn2003hy	1200	4:02	21:54:22.7	+15:09:37	300	-42	3.0	#2 SN Observat	2	
0087.COMP	12	4:23	21:54:22.7	+15:09:37	300	-42	3.0	#2 SN Observat	2	ccd problems....
0088.BDp284211	60	6:02	21:48:57.1	28:37:48	600	90	2.0	#122 Halo Star	2	600L, 2arcsec, tilt=430
0089.COMP	20	6:04	21:48:57.1	28:37:48	600	90	2.0	#122 Halo Star	2	
0090.hss117	1800	6:06	23:18:47.8	-0:57:34	600	90	2.0	#122 Halo Star	2	
0091.COMP	20	6:36	23:18:47.8	-0:57:34	600	90	2.0	#122 Halo Star	2	
0092.hss118	1020	6:38	23:21:11.8	-1:14:43	600	90	2.0	#122 Halo Star	2	
0093.COMP	20	6:55	23:21:11.8	-1:14:43	600	90	2.0	#122 Halo Star	2	
0094.hss119	1620	6:56	23:23:42.7	-0:29:33	600	90	2.0	#122 Halo Star	2	
0095.COMP	20	7:24	23:23:42.7	-0:29:33	600	90	2.0	#122 Halo Star	2	
0096.hss120	1320	7:25	23:26:07.4	-0:35:09	600	90	2.0	#122 Halo Star	2	
0097.COMP	20	7:47	23:26:07.4	-0:35:09	600	90	2.0	#122 Halo Star	2	
0098.hss125	780	7:49	23:43:20.6	0:35:26	600	90	2.0	#122 Halo Star	2	
0099.COMP	20	8:02	23:43:20.6	0:35:26	600	90	2.0	#122 Halo Star	2	
0100.hss126	1080	8:03	23:44:18.9	-0:26:51	600	90	2.0	#122 Halo Star	2	

UT Date 2003-09-27 Observers M CalkinsColl. Focus 1080 Grating/Grism 300

File	Exp Time	UT Start	RA	Dec	Gr.	P.A.	Slit	Program	Bin	Comments
0101.COMP	20	8:22	23:44:18.9	-0:26:51	600	90	2.0	#122 Halo Star	2	
0102-0111.FLAT	80	8:37	23:44:18.9	-0:26:51	600	90	2.0	#122 Halo Star	2	
0112.sn2003ic	1200	8:53	00:41:50.2	-09:18:19	300	20	3.0	#2 SN Observat	2	row=75, combo setup...
0113.COMP	12	9:14	00:41:50.2	-09:18:19	300	20	3.0	#2 SN Observat	2	
0114.011948p08470.b	1800	9:20	1:22:25.3	9:3:34	300	90	3.0	#113 Interacti	2	
0115.COMP	12	9:50	1:22:25.3	9:3:34	300	90	3.0	#113 Interacti	2	
0116.011948p08470.e	1320	9:51	1:22:57.5	9:7:14	300	90	3.0	#113 Interacti	2	
0117.COMP	12	10:14	1:22:57.5	9:7:14	300	90	3.0	#113 Interacti	2	
0118.EGAnd	0	10:20	0:44:37	40:40:47	300	90	3.0	#12 Symbiotic	2	
0119.EGAnd	1	10:21	0:44:37	40:40:47	300	90	3.0	#12 Symbiotic	2	
0120.EGAnd	5	10:21	0:44:37	40:40:47	300	90	3.0	#12 Symbiotic	2	
0121.EGAnd	10	10:21	0:44:37	40:40:47	300	90	3.0	#12 Symbiotic	2	
0122.COMP	12	10:22	0:44:37	40:40:47	300	90	3.0	#12 Symbiotic	2	
0123.AXPer	2	10:24	1:36:23	54:15:03	300	90	3.0	#12 Symbiotic	2	
0124.AXPer	10	10:24	1:36:23	54:15:03	300	90	3.0	#12 Symbiotic	2	
0125.AXPer	40	10:25	1:36:23	54:15:03	300	90	3.0	#12 Symbiotic	2	
0126.AXPer	90	10:27	1:36:23	54:15:03	300	90	3.0	#12 Symbiotic	2	
0127.COMP	12	10:29	1:36:23	54:15:03	300	90	3.0	#12 Symbiotic	2	
0128.2M04083970p3713465	780	10:32	04:08:39.7	+37:13:46	300	90	3.0	#68 2MASS Reds	2	row=74
0129.COMP	12	10:45	04:08:39.7	+37:13:46	300	90	3.0	#68 2MASS Reds	2	

UT Date 2003-09-27 Observers M CalkinsColl. Focus 1080 Grating/Grism 300

File	Exp Time	UT Start	RA	Dec	Gr.	P.A.	Slit	Program	Bin	Comments
0130.2M04141845p6512392	1200	10:47	04:14:18.4	+65:12:39	300	90	3.0	#68 2MASS Reds	2	
0131.COMP	12	11:08	04:14:18.4	+65:12:39	300	90	3.0	#68 2MASS Reds	2	
0132.2M04151703p2837038	1200	11:10	04:15:17.0	+28:37:03	300	90	3.0	#68 2MASS Reds	2	row=73
0133.COMP	12	11:31	04:15:17.0	+28:37:03	300	90	3.0	#68 2MASS Reds	2	
0134.2M04153413p6500531	1200	11:34	04:15:34.1	+65:00:53	300	110	3.0	#68 2MASS Reds	2	Halpha, row=75
0135.COMP	12	11:55	04:15:34.1	+65:00:53	300	110	3.0	#68 2MASS Reds	2	
0136.2M04155257p2839259	540	11:57	04:15:52.5	+28:39:25	300	90	3.0	#68 2MASS Reds	2	
0137.COMP	12	12:07	04:15:52.5	+28:39:25	300	90	3.0	#68 2MASS Reds	2	
0138.2M04193008p3559091	240	12:08	04:19:30.0	+35:59:09	300	90	3.0	#68 2MASS Reds	2	
0139.COMP	12	12:12	04:19:30.0	+35:59:09	300	90	3.0	#68 2MASS Reds	2	
0140.2M04201468p6604558	270	12:14	04:20:14.6	+66:04:55	300	90	3.0	#68 2MASS Reds	2	
0141.COMP	12	12:19	04:20:14.6	+66:04:55	300	90	3.0	#68 2MASS Reds	2	
0142.Hiltner600	30	12:22	06:42:37.2	02:11:25	300	90	3.0	#56 Spectropho	2	
0143.Hiltner600	30	12:22	06:42:37.2	02:11:25	300	90	3.0	#56 Spectropho	2	
0144.COMP	12	12:23	06:42:37.2	02:11:25	300	90	3.0	#56 Spectropho	2	
0145.Hiltner600	30	12:25	06:42:37.2	02:11:25	300	-31	3.0	#56 Spectropho	2	
0146.Hiltner600	30	12:26	06:42:37.2	02:11:25	300	-31	3.0	#56 Spectropho	2	
0147.COMP	12	12:27	06:42:37.2	02:11:25	300	-31	3.0	#56 Spectropho	2	
0148-0157.BIAS	0	12:31	06:42:37.2	02:11:25	300	90	3.0	#113 Interacti	2	
0158-0167.FLAT	12	12:37	06:42:37.2	02:11:25	300	90	3.0	#113 Interacti	2	

UT Date 2003-09-27 Observers M CalkinsColl. Focus 1080 Grating/Grism 300

<i>File</i>	<i>Exp Time</i>	<i>UT Start</i>	<i>RA</i>	<i>Dec</i>	<i>Gr.</i>	<i>P.A.</i>	<i>Slit</i>	<i>Program</i>	<i>Bin</i>	<i>Comments</i>
0168-0177.DARK	900	14:54	06:42:37.2	02:11:25	300	90	3.0	#113 Interacti	2	