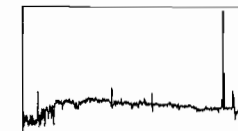


UT Date 2004-02-14 Observers M CalkinsColl. Focus 920 Grating/Grism 300

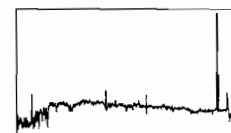
File	Exp Time	UT Start	RA	Dec	Gr.	P.A.	Slit	Program	Bin	Comments
0001-0010.DARK	900	0:03	15:50:03.0	33:05:49	300	90	3.0	#2 SN Observat	4	
0011-0020.BIAS	0	0:56	15:50:03.0	33:05:49	300	90	3.0	#2 SN Observat	4	
0021-0030.FLAT	6	0:59	15:50:03.0	33:05:49	300	90	3.0	#2 SN Observat	4	
0031-0040.BIAS	0	1:02	15:50:03.0	33:05:49	300	90	3.0	#2 SN Observat	2	
0041-0050.FLAT	12	1:06	15:50:03.0	33:05:49	300	90	3.0	#2 SN Observat	2	
0051-0055.sky	2	1:23	15:50:03.0	33:05:49	300	90	3.0	#2 SN Observat	4	
0056.COMP	5	1:24	15:50:03.0	33:05:49	300	90	3.0	#2 SN Observat	4	
0057.Hiltner600	45	1:53	06:42:37.2	02:11:25	300	90	3.0	#56 Spectropho	4	
0058.Hiltner600	45	1:53	06:42:37.2	02:11:25	300	90	3.0	#56 Spectropho	4	
0059.COMP	5	1:55	06:42:37.2	02:11:25	300	90	3.0	#56 Spectropho	4	
0060.Hiltner600	45	1:56	06:42:37.2	02:11:25	300	90	3.0	#56 Spectropho	2	
0061.Hiltner600	45	1:57	06:42:37.2	02:11:25	300	90	3.0	#56 Spectropho	2	
0062.COMP	12	1:59	06:42:37.2	02:11:25	300	90	3.0	#56 Spectropho	2	
0063.WEIN_026	600	2:13	04:39:58.3	49:20:51	300	90	3.0	#68 2MASS Reds	2	
0064.COMP	12	2:24	04:39:58.3	49:20:51	300	90	3.0	#68 2MASS Reds	2	
0065.WEIN_027	720	2:26	4:40:2.5	49:18:51	300	90	3.0	#68 2MASS Reds	2	get again
0066.COMP	12	2:38	4:40:2.5	49:18:51	300	90	3.0	#68 2MASS Reds	2	
0067.WEIN_027	900	2:39	4:40:2.5	49:18:51	300	90	3.0	#68 2MASS Reds	2	
0068.COMP	12	2:54	4:40:2.5	49:18:51	300	90	3.0	#68 2MASS Reds	2	
0069.2MJ02041168+3509221	420	2:57	02:04:11.6	+35:09:22	300	90	3.0	#68 2MASS Reds	2	

UT Date 2004-02-14 Observers M CalkinsColl. Focus 920 Grating/Grism 300

File	Exp Time	UT Start	RA	Dec	Gr.	P.A.	Slit	Program	Bin	Comments
0070.COMP	12	3:04	02:04:11.6	+35:09:22	300	90	3.0	#68 2MASS Reds	2	
0071.2MJ03382239+4222252	300	3:10	03:38:22.3	+42:22:25	300	90	3.0	#68 2MASS Reds	2	
0072.COMP	12	3:16	03:38:22.3	+42:22:25	300	90	3.0	#68 2MASS Reds	2	
0073.2MJ0342493+313838	1200	3:23	3:42:49.3	31:38:38	300	90	3.0	#68 2MASS Reds	2	
0074.2MJ0342493+313838	1200	3:43	3:42:49.3	31:38:38	300	90	3.0	#68 2MASS Reds	2	
0075.COMP	12	4:04	3:42:49.3	31:38:38	300	90	3.0	#68 2MASS Reds	2	
0076.2M0429260+151944	900	4:09	4:29:26	15:19:44	300	90	3.0	#68 2MASS Reds	2	
0077.COMP	12	4:25	4:29:26	15:19:44	300	90	3.0	#68 2MASS Reds	2	
0078.2M0431584+733837	480	4:28	4:31:58.4	73:38:37	300	90	3.0	#68 2MASS Reds	2	
0079.COMP	12	4:37	4:31:58.4	73:38:37	300	90	3.0	#68 2MASS Reds	2	
0080.sn2003kf	1200	5:09	06:04:35.4	-12:37:42	300	21	3.0	#2 SN Observat	2	
0081.COMP	12	5:29	06:04:35.4	-12:37:42	300	21	3.0	#2 SN Observat	2	
0082.HD84937	5	5:36	09:48:56.1	13:44:39	300	-40	3.0	#56 Spectropho	2	
0083.HD84937	5	5:36	09:48:56.1	13:44:39	300	-40	3.0	#56 Spectropho	2	
0084.COMP	12	5:37	09:48:56.1	13:44:39	300	-40	3.0	#56 Spectropho	2	
0085.Hiltner600	20	5:45	06:42:37.2	02:11:25	300	90	5.0	#56 Spectropho	2	5 arcsec slit
0086.Hiltner600	20	5:46	06:42:37.2	02:11:25	300	90	5.0	#56 Spectropho	2	
0087.COMP	7	5:46	06:42:37.2	02:11:25	300	90	5.0	#56 Spectropho	2	
0088.Feige34	40	5:49	10:36:41.2	43:21:50	300	90	5.0	#56 Spectropho	2	
0089.Feige34	40	5:50	10:36:41.2	43:21:50	300	90	5.0	#56 Spectropho	2	

UT Date 2004-02-14 Observers M CalkinsColl. Focus 920 Grating/Grism 300

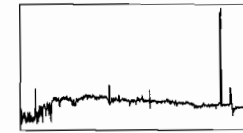
File	Exp Time	UT Start	RA	Dec	Gr.	P.A.	Slit	Program	Bin	Comments
0090.COMP	7	5:51	10:36:41.2	43:21:50	300	90	5.0	#56 Spectropho	2	
0091-0100.FLAT	7	5:56	10:36:41.2	43:21:50	300	90	5.0	#56 Spectropho	2	
0101.Feige34	120	6:10	10:36:41.2	43:21:50	600	90	2.0	#122 Halo Star	4	2 arcsec slit, 600L, tilt=440
0102.COMP	10	6:13	10:36:41.2	43:21:50	600	90	2.0	#122 Halo Star	4	
0103.hs1725	600	6:14	10:44:47.3	34:29:50	600	90	2.0	#122 Halo Star	4	
0104.COMP	10	6:25	10:44:47.3	34:29:50	600	90	2.0	#122 Halo Star	4	
0105.hs1726	534	6:26	10:44:48.6	39:35:35	600	90	2.0	#122 Halo Star	4	
0106.COMP	10	6:35	10:44:48.6	39:35:35	600	90	2.0	#122 Halo Star	4	
0107.hs1727	500	6:37	10:44:59.7	25:10:51	600	90	2.0	#122 Halo Star	4	thin clouds, get again
0108.COMP	10	6:46	10:44:59.7	25:10:51	600	90	2.0	#122 Halo Star	4	
0109.hs1727	600	6:49	10:44:59.7	25:10:51	600	90	2.0	#122 Halo Star	4	
0110.COMP	10	6:59	10:44:59.7	25:10:51	600	90	2.0	#122 Halo Star	4	
0111.hs1728	600	7:00	10:46:29.2	18:45:09	600	90	2.0	#122 Halo Star	4	bah! get again!
0112.COMP	10	7:11	10:46:29.2	18:45:09	600	90	2.0	#122 Halo Star	4	
0113.hs1728	1200	7:11	10:46:29.2	18:45:09	600	90	2.0	#122 Halo Star	4	
0114.COMP	10	7:32	10:46:29.2	18:45:09	600	90	2.0	#122 Halo Star	4	
0115.FLAT	40	7:36	10:47:18.1	29:34:49	600	90	2.0	#56 Spectropho	4	take flats while clouds move through
0116-0124.FLAT	40	7:43	10:47:18.1	29:34:49	600	90	2.0	#56 Spectropho	4	
0125.hs1729	480	7:54	10:47:18.1	29:34:49	600	90	2.0	#122 Halo Star	4	
0126.COMP	10	8:02	10:47:18.1	29:34:49	600	90	2.0	#122 Halo Star	4	



UT Date 2004-02-14 Observer Calkins

Coll. Focus 920 Grating/Grism 300

File	Exp Time	RA	Dec	Gr.	P.A.	Slit	Program	Bin	Comments
0127.hs1730	600	10:47:18.4	25:24:15	600	90	2.0	#122 Halo Star	4	wait out more clouds...
0128.COMP	10	10:47:18.4	25:24:15	600	90	2.0	#122 Halo Star	4	
0129.sn2004L	1200	10:27:04.1	+16:01:07	300	60	3.0	#2 SN Observat	2	combo setup
0130.COMP	12	10:27:04.1	+16:01:07	300	60	3.0	#2 SN Observat	2	
0131.2004X1	1200	11:43:28.2	21:40:30	300	60	3.0	#2 SN Observat	2	
0132.COMP	12	11:43:28.2	21:40:30	300	60	3.0	#2 SN Observat	2	
0133.2004X1_HOST	540	11:43:28.2	21:40:30	300	60	3.0	#2 SN Observat	2	clouds...try again
0134.COMP	12	11:43:28.2	21:40:30	300	60	3.0	#2 SN Observat	2	
0135.2004X1_HOST	1020	11:43:28.2	21:40:30	300	60	3.0	#2 SN Observat	2	
0136.COMP	12	11:43:28.2	21:40:30	300	60	3.0	#2 SN Observat	2	
0137.cairnsk5_007	480	13:10:42	28:38:6	300	90	3.0	#64 Cluster In	2	clouds, get again...
0138.COMP	12	13:10:42	28:38:6	300	90	3.0	#64 Cluster In	2	
0139.cairnsk5_007	900	13:10:42	28:38:6	300	90	3.0	#64 Cluster In	2	
0140.COMP	12	13:10:42	28:38:6	300	90	3.0	#64 Cluster In	2	
0141.cairnsk5_008	1020	12:42:21.6	32:14:18	300	90	3.0	#64 Cluster In	2	
0142.COMP	12	12:42:21.6	32:14:18	300	90	3.0	#64 Cluster In	2	
0143.cairnsk5_009	1020	13:16:30.1	30:16:21	300	90	3.0	#64 Cluster In	2	
0144.COMP	12	13:16:30.1	30:16:21	300	90	3.0	#64 Cluster In	2	
0145.FineFoc	60	14:54:52.5	31:25:24	300	90	3.0	#2 SN Observat	1	
0146.BDp332642	60	15:50:03.0	33:05:49	300	75	3.0	#56 Spectropho	2	

UT Date 2004-02-14 Observers M CalkinsColl. Focus 920 Grating/Grism 300

<i>File</i>	<i>Exp Time</i>	<i>UT Start</i>	<i>RA</i>	<i>Dec</i>	<i>Gr.</i>	<i>P.A.</i>	<i>Slit</i>	<i>Program</i>	<i>Bin</i>	<i>Comments</i>
0147.BDp332642	60	13:20	15:50:03.0	33:05:49	300	75	3.0	#56 Spectropho	2	
0148.COMP	12	13:21	15:50:03.0	33:05:49	300	75	3.0	#56 Spectropho	2	
0149-0158.BIAS	0	13:26	15:50:03.0	33:05:49	300	90	3.0	#2 SN Observat	4	
0159-0168.FLAT	6	13:31	15:50:03.0	33:05:49	300	90	3.0	#2 SN Observat	4	
0169-0178.BIAS	0	13:35	15:50:03.0	33:05:49	300	90	3.0	#2 SN Observat	2	
0179-0188.FLAT	12	13:40	15:50:03.0	33:05:49	300	90	3.0	#2 SN Observat	2	
0189-0198.DARK	900	16:01	15:50:03.0	33:05:49	300	90	3.0	#2 SN Observat	2	